

California QSO Party

CQP 2024: Fun Contest Challenges

Click on any entry in this Table of Contents to jump directly to that page.

| | |
|-----------------------------------|----|
| Contests within CQP 2024 | 2 |
| Time Challenge | 3 |
| Time Challenge Award | 4 |
| Time Challenge Alternate Award | 5 |
| Parks on the Air (POTA) Challenge | 6 |
| POTA Challenge Award | 7 |
| POTA Challenge Rules | 8 |
| Video Challenge | 9 |
| FAQ - Time Challenge | 10 |
| FAQ - POTA Challenge | 12 |
| FAQ - Video Challenge | 15 |



California QSO Party

Contests within CQP 2024

Beginning with CQP 2024, we will introduce three new, fun challenges within the CQP contest:

1. Time Challenge
2. Parks on the Air (POTA) Challenge
3. Video Challenge

These are side contests that run along with the main CQP event. They are intended to inspire additional motivation by participants.

We will offer unique awards to the winners of these challenges.

Participants do not need to sign up for any of these challenges. Eligible stations will automatically be included in any or all of the challenges.

There are no changes to main CQP rules, categories, overlays, scoring, awards and main results files. All of that will continue unchanged in CQP 2024. These are additional side challenges to enjoy.



California QSO Party

Time Challenge

Eligibility:

- Single-Operator and Single-Operator Assisted entrants
- Any power level
- Log submitted to CQP and judged to be a valid, scored log

Accolade:

8 Champions - 4 inside California and 4 outside California

Winners determined by **highest total number of QSOs** after log checking.

6-Hour Time Champions - one inside California and one outside California

- Operate 1 minute to 360 minutes (0-6 hours) in CQP 2024.

12-Hour Time Champions - one inside California and one outside California

- Operate 361 minutes to 720 minutes (6-12 hours) in CQP 2024.

18-Hour Time Champions - one inside California and one outside California

- Operate 721 minutes to 1080 minutes (12-18 hours) in CQP 2024.

24-Hour Time Champions - one inside California and one outside California

- Operate 1081 minutes to 1440 minutes (18-24 hours) in CQP 2024.

Award:

- Gourmet California cheese gift pack to champions inside the USA
- California cheese board as alternate award if any champion lives outside the USA
- Top 10 list in results for all four operating time windows

Sponsor:

N6DE



California QSO Party

Time Challenge Award



California QSO Party

Time Challenge Alternate Award



California QSO Party

Parks on the Air (POTA) Challenge

Eligibility:

- All entrants who operate CQP 2024 from a Parks on the Air (POTA) reference. Operation is judged to have been a valid POTA activation.
- Any power level
- Log submitted to CQP and judged to be a valid, scored log
- Log submitted to pota.app. Activation officially appears on pota.app web page under the POTA reference with the same callsign as the CQP log submission callsign.

Accolade:

Winners determined by **highest total number of QSOs**.

Inside California:

- Top 10 Single-Operator or Single-Operator Assisted POTA entries
- Top 1 Multi-Single POTA entry
- Top 1 Multi-Two POTA entry
- Top 1 Multi-Multi POTA entry

Outside California:

- Top 1 Single-Operator or Single-Operator Assisted POTA entry

Award:

- Single-Ops: CQP POTA hat with POTA logo and embroidered with operator's name and callsign
- Multi-Ops: Maximum of 4 CQP POTA hats with POTA logo to valid operators of the winning Multi-Ops, embroidered with operator names and calls. Additional hats available for purchase if desired.
- All POTA entries listed in a dedicated POTA results table

Sponsors:

NN6U

Northern California Contest Club



California QSO Party

POTA Challenge Award



FRONT



**NAME & CALL
ON REAR OF HAT**



California QSO Party

POTA Challenge Rules

Stations that operate from one or more Parks on the Air (POTA) references may enter the CQP POTA Challenge.

1. POTA contacts for this challenge must comprise one or more valid POTA activations, with logs submitted to pota.app and processed successfully prior to the CQP log submission deadline.
2. For each POTA reference activated, include a SOAPBOX line of "POTA" followed by the POTA reference activated and the number of **CQP** QSOs from that reference, e.g. "SOAPBOX: POTA US-1138 75". The total number of CQP QSOs from all POTA references in the log submission will be combined.
3. QSOs made by a CA county-line station each count as a single QSO for purposes of this challenge.
4. For stations operating from a location that overlaps multiple POTA references (a POTA "*n*-fer"), and for park-to-park QSOs where the other party is in multiple simultaneous POTA references, each QSO only counts as a single QSO for purposes of this challenge. If activating an *n*-fer, only list one of the references in the SOAPBOX line for that activation.
5. **CQP POTA hat** awards will be offered for:
 - a. Top 10 Single-Operator or Single-Operator-Assisted POTA entries in California (SO or SOA, regardless of power level)
 - b. Top 1 Multi-Single POTA entry in California
 - c. Top 1 Multi-Two POTA entry in California
 - d. Top 1 Multi-Multi POTA entry in California
 - e. Top 1 SO/SOA POTA operator outside California.
 - f. If fewer entries qualify in any category, additional hats may be awarded in the other categories.
 - g. For the Multi-operator awards, each winning entry will receive 1 hat per listed operator, up to a maximum of 4 hats per winning entry. Hats for additional operators may be purchased at the winners' expense. Ordering codes for all hats will be sent to the contact submitting the log (Cabrillo EMAIL line) for distribution to the operators at their discretion.
6. Operation must follow all rules of the CQP and of POTA and each QSO claimed for the challenge must be valid for both CQP and POTA.



California QSO Party

Video Challenge

Eligibility:

- Any entrant except checklogs
- Any power level
- Log submitted to CQP and judged to be a valid, scored log
- Send your video or a link to your video to cqp.chairman@gmail.com by November 1, 2024.

Accolade:

Best CQP 2024 Video, judged by CQP Chair N6DE

Award:

- Gourmet California cheese gift pack to winner if inside the USA
- California cheese board as alternate award if winner lives outside the USA
- All submitted videos that are suitable for public posting will be included on the cqp.org audio/video page. They will be included in a CQP 2024 YouTube playlist that will be published for the amateur radio community to view.

Sponsor:

N6DE



California QSO Party

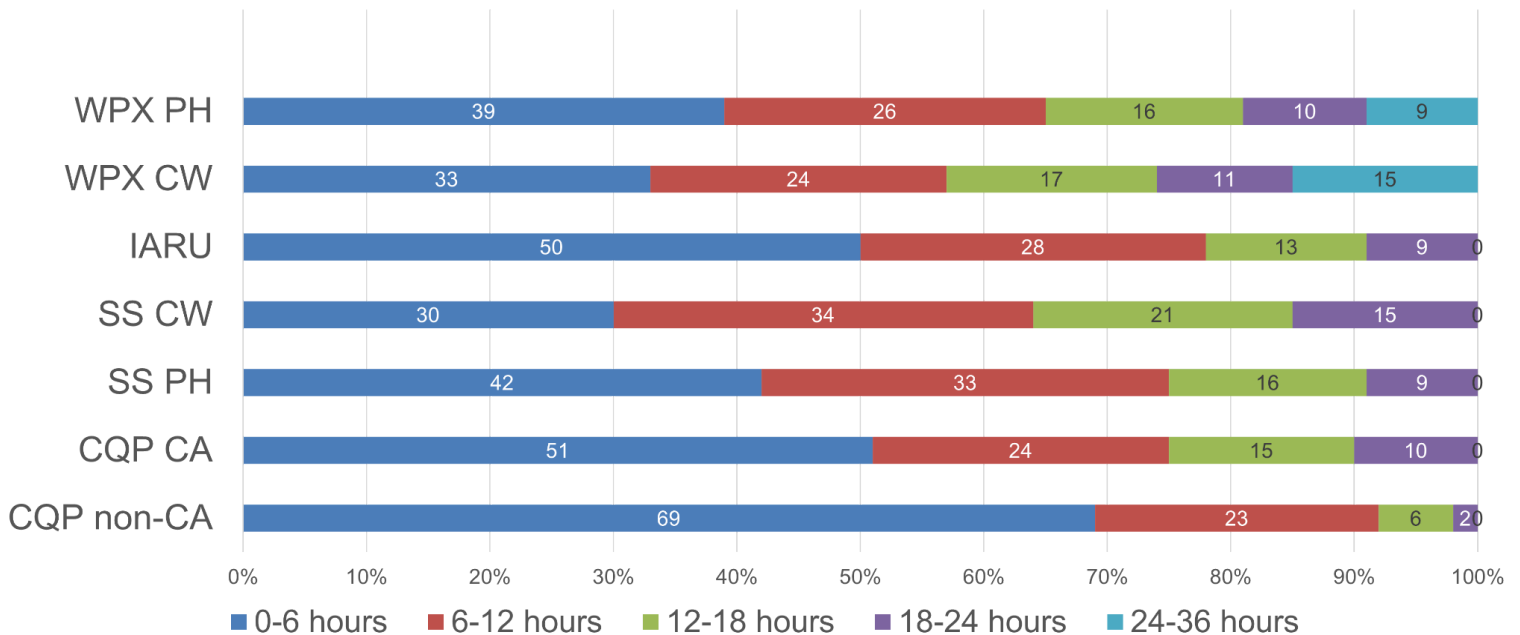
FAQ - Time Challenge

Q: Why did you create the CQP Time Challenge?

A: Few Single-Op participants are willing or able to operate the full 24, 36 or 48 hours available in contests. We in the contest community have the opportunity to recognize participants for outstanding performances in shorter operating periods. In the Olympics track and field events, there are seven different duration races that range from the shortest 100m sprints up to the longest with the 10km distance race. All are run on the same track, just running different distances. The sprint athletes are no less worthy than long distance runners.

Consider operating time data from multiple contests in 2023. See chart below. There is clearly an opportunity to enhance incentives and recognition to the vast majority of participants who do not operate contests full time but who are still competitive. We split the CQP Time Challenge into four quarters, similar to an NFL or college football game, or an NBA basketball game. You operate the amount of time that you're able to operate in CQP 2024. We will compare your total QSOs with other participants in your same operating time quarter. This is accomplished without changing any rules and without needing to shorten a contest.

S/O Op Time in 2023 Contests



California QSO Party

Q: How is operating time determined in CQP?

A: Operating time is the time you spend making QSOs in CQP. The operating time clock starts with your first QSO made in CQP. It keeps going until you have 15 consecutive minutes in your log without making a QSO. This is considered an off-time period and does not count toward your operating time. Off times are a minimum of 15 minutes long, with no maximum (your off times could be several hours long). There is no limit on the number of off times you have in CQP.

Q: How can I be the most competitive in a given time challenge?

A:

1. Operate as close to 6 hours, 12 hours, 18 hours or 24 hours as you can, and do not exceed. Watch your on-time statistic carefully in your software logger. Operating 6 hours and 1 minute puts you in the 12-hour time challenge window, not the 6 hour window.
2. Operate in a way that maximizes your total QSOs. You might find that operating both CW and SSB will help. The points difference between CW QSOs (3 points) and SSB QSOs (2 points) is irrelevant just for the purposes of this Time Challenge because this challenge is scored by QSOs made, not points. Your log will be scored as normal in the main overall CQP results.
3. Review last year's CQP data graphs to decide when you should operate. See: <https://www.cqp.org/graphs.html>
4. Running high power and entering as Single-Op Assisted will likely give you a competitive advantage.
5. Review propagation and play to the strengths of your station.
6. Make sure the clock on your computer is accurate before the start of CQP and stays that way throughout CQP. If your computer is connected to the Internet, for Windows 10/11 machines, right click the time in the bottom right of your screen, click Adjust date/time, and click the Sync Now button. Alternatively for any Windows machine, download a free program called NetTime from <https://www.timesynctool.com/> and install it. This program automatically sets your computer clock at regular intervals. Inside the NetTime program, click the Settings button and modify the Update Interval to a value more frequent than default.



California QSO Party

FAQ - POTA Challenge

Q: Can I enter the POTA challenge in addition to entering CQP special award categories like Expedition or Mobile?

A: Yes. Most POTA activations would likely also qualify as one of the Expedition or Mobile categories. This challenge is independent of any special award category and it is possible to win multiple such awards.

Q: I didn't make it into the top entries for my category. Can I still get a hat?

A: Yes. A code to order a hat at your own expense will be sent to each qualifying entry (i.e. entries that include at least one successful POTA activation and follow all other POTA Challenge rules).

Q: Is it OK if only some of my CQP contacts are from a POTA reference and others are not (e.g. a Mobile activation passing through a National Forest)? If it OK if some of my POTA QSOs are valid CQP contacts and others are not (e.g. VHF or FT8 contacts or contacts outside the CQP timeframe)?

A: Yes. Just be sure to include the correct number of CQP QSOs for each POTA reference in the SOAPBOX lines (i.e. just the ones that you are also including in your CQP log) and make sure you have also submitted your logs to pota.app. Only count *n*-fer activations once (just give one of the POTA references), only count park-to-park *n*-fers once (since they only count as a single CQP contact), and only count CQP county-line contacts once (since they just count as a single contact for POTA). Basically, one QSO per QSO. We recognize that the POTA QSO counts may be higher than the counts listed in your CQP SOAPBOX lines.

Q: Does the required CQP exchange conflict with a POTA QSO exchange?

A: No. There is no required exchange in POTA. Any QSO that exchanges any info at all (even a signal report) is a valid POTA QSO. This is by design, so POTA is compatible with any other radio activity you might be doing from your park. You don't need to mention that you're doing POTA, you don't need to exchange park info, you don't need to be spotted on the POTA site. Just use the regular CQP exchange, although if you are calling CQ you might want to occasionally call CQ POTA to attract more callers.

Q: Can I spot myself during CQP on a POTA spotting page like I normally do when I'm a POTA activator?

A: No. Self-spotting is not allowed in CQP. It is acceptable for other stations to spot you. It is also acceptable to announce your POTA park number on the air. A POTA hunter might decide to spot you and your POTA park number on a POTA spotting web page.



California QSO Party

Q: What logging software should I use in CQP?

A: See CQP software page at: <https://www.cqp.org/Software.html>

Export an ADIF output from your logger and upload it to the pota.app web site. Export a Cabrillo file and upload it to the CQP log submission page.

Q: I operate the FT8 mode in my POTA activations. Does CQP allow FT8 QSOs?

A: No. CW and SSB are the only valid modes in CQP.

Q: If I also make some POTA contacts that don't count for CQP (e.g. FT8 or VHF contacts), how should I log those?

A: It's simplest to log those separately in whatever logger you normally use for POTA. You can submit the ADIF file for these contacts to pota.app separately from the ADIF file from your CQP logger, and the POTA site will combine them for purposes of your activation. There's no need to manually manipulate or merge your CQP and non-CQP ADIF files.

Q: If I use a 1x1 callsign or a club callsign in CQP, will the POTA web page support them?

A: Yes. Make sure to fill out STATION_CALLSIGN and OPERATOR fields properly in your ADIF file that you upload to pota.app. Please see https://docs.pota.app/docs/activator_reference/activator_guide_clubs.html for more guidance.

Q: The rules say "valid POTA activations" – what does this mean?

A: Minimum 10 contacts within the same UTC day to qualify as a valid POTA activation. See POTA rules at: <https://docs.pota.app/docs/rules.html>

If your POTA activation is successful including non-CQP QSOs, we will consider it successful (e.g. if you had 7 CQP QSOs and then finished up the activation with 3 FT8 non-CQP QSOs, list only 7 in the SOAPBOX line, but it will count as a successful activation for the purposes of this challenge if it counts as a successful activation on pota.app).

Q: Could you provide more information about operating in a contest from a POTA park, and information about past CQP expedition and mobile stations?

A: Please watch the W1DED interview with NN6U and N6DE at: <https://youtu.be/QuPezzuTDZ0?feature=shared>

Please also watch all the videos on the CQP audio-video page at: <https://www.cqp.org/av.html>



California QSO Party

Q: The CQP rules state that CW QSOs are worth 3 points each and SSB QSOs are worth 2 points each. But I'm an SSB-only operator. Does this mean I'm at a disadvantage for the POTA Challenge CQP hat?

A: No. CQP POTA hat winners are determined by total number of QSOs made in CQP, not total points scored in CQP.



California QSO Party

FAQ - Video Challenge

Q: What content should I have in my video, and how long should my video be?

A: The topic of your video needs to be about CQP 2024 in some way. It could be content before, during or after CQP 2024, or a combination thereof. Other than that, the content is up to you and your creativity. For a wide variety of examples, see all the CQP 2023 videos on our web page at: <https://cqp.org/av.html>

Q: Does CQP Video Challenge mean it's now allowed for me to live stream myself during CQP?

A: No. If you live stream, you will need to designate your CQP log as a checklog. Live streaming is not allowed for scored logs in CQP. You can still live stream, be a checklog, and send your live stream link recording to cqp.chairman@gmail.com for inclusion in the list of all videos we will publish. However, live streaming stations will not be eligible for the cheese award given to the winner of the video challenge. Only valid scored logs are eligible for the award.

Q: Where should I upload my video?

A: YouTube is preferable. Email cqp.chairman@gmail.com the link to your YouTube video.

Q: What if I am clueless about YouTube?

A: Send cqp.chairman@gmail.com your video in another way and let's discuss.

