

# California QSO Party

## CQP 2024: Time Challenge

*Click on any entry in this Table of Contents to jump directly to that page.*

2024 Time Challenge Background	2
Time Challenge Rules	3
<b>Time Challenge Results</b>	<b>4</b>
CA Champions: 2024 Time Challenge	4
US/VE/DX Champions: 2024 Time Challenge	5
Top 10 CA Single-Ops: 24-Hour Time Challenge	6
Top 10 CA Single-Ops: 18-Hour Time Challenge	7
Top 10 CA Single-Ops: 12-Hour Time Challenge	8
Top 10 CA Single-Ops: 6-Hour Time Challenge	9
Top 10 US/VE/DX Single-Ops: 24-Hour Time Challenge	10
Top 10 US/VE/DX Single-Ops: 18-Hour Time Challenge	11
Top 10 US/VE/DX Single-Ops: 12-Hour Time Challenge	12
Top 10 US/VE/DX Single-Ops: 6-Hour Time Challenge	13
FAQ - Time Challenge	14



# California QSO Party

## 2024 Time Challenge Background

Beginning with CQP 2024, we introduced the CQP Time Challenge.

This was a fun side contest that ran along with the main CQP event. It was intended to inspire additional motivation by participants.

Participants did not need to sign up for any of these challenges. Eligible stations were automatically included in the CQP Time Challenge.

There were no changes to the main CQP rules, categories, overlays, scoring, plaques and main results files. All of that continued unchanged in CQP 2024. This was an additional side challenge to enjoy.

Congratulations to all the time champions who won this CA cheese award.



# California QSO Party

## Time Challenge Rules

### Eligibility:

- Single-Operator and Single-Operator Assisted entrants
- Any power level
- Log submitted to CQP and judged to be a valid, scored log

### Accolade:

8 Champions - 4 inside California and 4 outside California

Winners determined by **highest total number of QSOs** after log checking.

6-Hour Time Champions - one inside California and one outside California

- Operate 1 minute to 360 minutes (0-6 hours) in CQP 2024.

12-Hour Time Champions - one inside California and one outside California

- Operate 361 minutes to 720 minutes (6-12 hours) in CQP 2024.

18-Hour Time Champions - one inside California and one outside California

- Operate 721 minutes to 1080 minutes (12-18 hours) in CQP 2024.

24-Hour Time Champions - one inside California and one outside California

- Operate 1081 minutes to 1440 minutes (18-24 hours) in CQP 2024.

### Award:

- Gourmet California cheese gift pack to champions inside the USA
- California cheese board as alternate award if any champion lives outside the USA
- Top 10 list in results for all four operating time windows



# California QSO Party

## Time Challenge Results

### CA Champions: 2024 Time Challenge

#### 24-Hour Champion (1,081-1,440 minutes operating time)

Winner	Op Class	QTH	CW QSOs	PH QSOs	Total QSOs	Operating Time	Award Sponsor
NT6Q (N5ZO op)	S/O Assisted HP	SDIE	1,900	699	2,599	1,438 minutes	N6DE

#### 18-Hour Champion (721-1,080 minutes operating time)

Winner	Op Class	QTH	CW QSOs	PH QSOs	Total QSOs	Operating Time	Award Sponsor
AE6Y	S/O HP	SCLA	1,266	482	1,748	1,080 minutes	N6DE

#### 12-Hour Champion (361-720 minutes operating time)

Winner	Op Class	QTH	CW QSOs	PH QSOs	Total QSOs	Operating Time	Award Sponsor
N6MJ	S/O HP	ORAN	823	411	1,234	565 minutes	AE6Y

#### 6-Hour Champion (1-360 minutes operating time)

Winner	Op Class	QTH	CW QSOs	PH QSOs	Total QSOs	Operating Time	Award Sponsor
K6AR	S/O HP	SDIE	531	0	531	233 minutes	N6DE



# California QSO Party

## US/VE/DX Champions: 2024 Time Challenge

### 24-Hour Champion (1,081-1,440 minutes operating time)

Winner	Op Class	QTH	CW QSOs	PH QSOs	Total QSOs	Operating Time	Award Sponsor
K5TR	S/O Assisted HP	TX	467	934	1,401	1,423 minutes	N6DE

### 18-Hour Champion (721-1,080 minutes operating time)

Winner	Op Class	QTH	CW QSOs	PH QSOs	Total QSOs	Operating Time	Award Sponsor
K0EJ	S/O HP	TN	316	383	699	906 minutes	N6DE

### 12-Hour Champion (361-720 minutes operating time)

Winner	Op Class	QTH	CW QSOs	PH QSOs	Total QSOs	Operating Time	Award Sponsor
W0BH	S/O Assisted HP	KS	245	463	708	695 minutes	N6DE

### 6-Hour Champion (1-360 minutes operating time)

Winner	Op Class	QTH	CW QSOs	PH QSOs	Total QSOs	Operating Time	Award Sponsor
N9RV	S/O Assisted HP	MT	200	111	311	241 minutes	N6DE



# California QSO Party

**CQP 2024**

## **Top 10 CA Single-Ops: 24-Hour Time Challenge**

**(1,081-1,440 minutes operating time)**

<b>Place</b>	<b>Callsign</b>	<b>Class</b>	<b>QTH</b>	<b>CW QSOs</b>	<b>PH QSOs</b>	<b>Total QSOs</b>	<b>Op Time</b>
1	NT6Q (N5ZO op)	S/O-Assisted HP	SDIE	1,900	699	2,599	1,438 minutes
2	K6XX	S/O-Assisted HP	SCRU	1,458	1,115	2,573	1,439 minutes
3	WC6H	S/O HP	CALA	1,234	1,070	2,304	1,410 minutes
4	K6LA	S/O HP	LANG	1,340	885	2,225	1,439 minutes
5	W6MY (N6DE op)	S/O-Assisted HP	SIER	1,346	764	2,110	1,440 minutes
6	W6YX (WD6T op)	S/O LP	SCLA	1,410	625	2,035	1,420 minutes
7	NW6P (W9KKN op)	S/O HP	SCLA	1,320	576	1,896	1,398 minutes
8	K6NA	S/O HP	SDIE	1,648	0	1,648	1,214 minutes
9	K6S (N6IE op)	S/O-Assisted HP	SONO	729	918	1,647	1,197 minutes
10	WA6KHK	S/O HP	RIVE	1,173	447	1,620	1,437 minutes



# California QSO Party

CQP 2024

## Top 10 CA Single-Ops: 18-Hour Time Challenge

(721-1,080 minutes operating time)

Place	Callsign	Class	QTH	CW QSOs	PH QSOs	Total QSOs	Op Time
1	AE6Y	S/O HP	SCLA	1,266	482	1,748	1,080 minutes
2	N6ZFO	S/O HP	LAKE	1,430	12	1,442	1,030 minutes
3	K6VO (K6NR op)	S/O HP	SBER	1,167	264	1,431	879 minutes
4	K6MMM (KE1B op)	S/O-Assisted HP	SCRU	914	472	1,386	812 minutes
5	N6RK	S/O HP	SACR	1,036	253	1,289	848 minutes
6	K6MM	S/O-Assisted HP	SCLA	977	185	1,162	1,043 minutes
7	W6A (AA2IL op)	S/O-Assisted LP	SDIE	1,139	0	1,139	1,041 minutes
8	W6EU	S/O HP	NEVA	1,103	0	1,103	783 minutes
9	AJ6V	S/O HP	SCLA	835	267	1,102	850 minutes
10	W6ZL	S/O LP	ORAN	1,081	0	1,081	1,014 minutes



# California QSO Party

**CQP 2024**

## **Top 10 CA Single-Ops: 12-Hour Time Challenge (361-720 minutes operating time)**

<b>Place</b>	<b>Callsign</b>	<b>Class</b>	<b>QTH</b>	<b>CW QSOs</b>	<b>PH QSOs</b>	<b>Total QSOs</b>	<b>Op Time</b>
1	N6MJ	S/O HP	ORAN	823	411	1,234	565 minutes
2	K6AO (W1SRD op)	S/O HP	ELDO	824	400	1,224	700 minutes
3	N6TV	S/O HP	SCLA	636	501	1,137	595 minutes
4	W6SX	S/O-Assisted HP	MONO	993	0	993	708 minutes
5	W6PZ (K6SRZ op)	S/O HP	SONO	781	208	989	719 minutes
6	NN6DX (W1PR op)	S/O LP	SBAR	634	274	908	650 minutes
7	W6XK	S/O-Assisted HP	STAN	368	439	807	624 minutes
8	K6RC	S/O-Assisted HP	SACR	557	136	693	412 minutes
9	AF6SA	S/O-Assisted HP	ELDO	456	236	692	671 minutes
10	K0DTJ/6	S/O-Assisted LP	SMAT	649	0	649	592 minutes





# California QSO Party

CQP 2024

## Top 10 CA Single-Ops: 6-Hour Time Challenge

(1-360 minutes operating time)

Place	Callsign	Class	QTH	CW QSOs	PH QSOs	Total QSOs	Op Time
1	K6AR	S/O HP	SDIE	531	0	531	233 minutes
2	K9JM	S/O HP	NEVA	514	0	514	353 minutes
3	K6RB	S/O HP	SCRU	513	0	513	221 minutes
4	NI6W (W4EF op)	S/O HP	LANG	433	0	433	277 minutes
5	N6AA	S/O LP	LANG	431	0	431	306 minutes
6	NA6O	S/O-Assisted LP	ALAM	404	0	404	213 minutes
7	W6PH	S/O HP	INYO	402	0	402	351 minutes
8	N6GP	S/O LP	ORAN	398	0	398	328 minutes
9	N6CW	S/O-Assisted HP	SDIE	392	0	392	345 minutes
10	N6XI	S/O HP	NEVA	360	0	360	159 minutes



# California QSO Party

**CQP 2024**

## Top 10 US/VE/DX Single-Ops: 24-Hour Time Challenge

**(1,081-1,440 minutes operating time)**

Place	Callsign	Class	QTH	CW QSOs	PH QSOs	Total QSOs	Op Time
1	K5TR	S/O-Assisted HP	TX	467	934	1,401	1,423 minutes
2	K9CT	S/O-Assisted HP	IL	486	842	1,328	1,224 minutes
3	NR4L	S/O-Assisted HP	TN	453	605	1,058	1,388 minutes
4	K7RAT (N6TR op)	S/O HP	OR	390	541	931	1,210 minutes
5	N4ZZ	S/O-Assisted LP	TN	410	475	885	1,352 minutes
6	W0EWD	S/O HP	IA	258	577	835	1,101 minutes
7	OM2VL	S/O-Assisted HP	DX	416	287	703	1,253 minutes
8	W0ELT	S/O-Assisted HP	WI	345	227	572	1,240 minutes
9	W7VC	S/O LP	OR	197	306	503	1,155 minutes
10	AH6KO	S/O-Assisted HP	HI	493	0	493	1,120 minutes



# California QSO Party

**CQP 2024**

## Top 10 US/VE/DX Single-Ops: 18-Hour Time Challenge

(721-1,080 minutes operating time)

Place	Callsign	Class	QTH	CW QSOs	PH QSOs	Total QSOs	Op Time
1	K0EJ	S/O HP	TN	316	383	699	906 minutes
2	N4OX	S/O HP	FL	229	466	695	992 minutes
3	K7RL	S/O-Assisted HP	WA	268	418	686	729 minutes
4	AB3CX	S/O-Assisted HP	NY	333	317	650	950 minutes
5	N6AR	S/O-Assisted HP	FL	357	265	622	866 minutes
6	KY7M	S/O-Assisted HP	AZ	289	330	619	862 minutes
7	KM5G	S/O-Assisted LP	AR	341	276	617	870 minutes
8	VE5MX	S/O-Assisted HP	SK	376	240	616	731 minutes
9	KL7SB	S/O HP	AK	287	325	612	940 minutes
10	VA3DF	S/O-Assisted HP	ON	358	235	593	967 minutes



# California QSO Party

**CQP 2024**

## Top 10 US/VE/DX Single-Ops: 12-Hour Time Challenge

**(361-720 minutes operating time)**

Place	Callsign	Class	QTH	CW QSOs	PH QSOs	Total QSOs	Op Time
1	W0BH	S/O-Assisted HP	KS	245	463	708	695 minutes
2	N1LN	S/O-Assisted HP	NC	352	273	625	701 minutes
3	NW0M	S/O-Assisted HP	MO	363	236	599	703 minutes
4	K5CM	S/O-Assisted HP	OK	296	256	552	708 minutes
5/6	HA3NU	S/O-Assisted HP	DX	292	184	476	702 minutes
	K2KR	S/O-Assisted HP	CO	0	476	476	707 minutes
7	N7EPD	S/O HP	WA	241	220	461	704 minutes
8	K7SV	S/O LP	VA	346	110	456	665 minutes
9	W04O	S/O-Assisted HP	FL	322	120	442	720 minutes
10	VA6RCN	S/O-Assisted LP	AB	249	186	435	650 minutes



# California QSO Party

**CQP 2024**

## Top 10 US/VE/DX Single-Ops: 6-Hour Time Challenge

**(1-360 minutes operating time)**

Place	Callsign	Class	QTH	CW QSOs	PH QSOs	Total QSOs	Op Time
1	N9RV	S/O-Assisted HP	MT	200	111	311	241 minutes
2	N0KK	S/O-Assisted LP	MN	191	119	310	317 minutes
3	K1RX	S/O-Assisted HP	NH	158	151	309	335 minutes
4/5	N9CO	S/O-Assisted LP	IL	304	0	304	322 minutes
	WQ5L	S/O HP	MS	148	156	304	360 minutes
6	N3QE	S/O-Assisted HP	MD	224	59	283	255 minutes
7	W1UE	S/O-Assisted HP	MA	160	113	273	334 minutes
8	W3MA	S/O-Assisted HP	PA	272	0	272	330 minutes
9	K5PI	S/O-Assisted HP	TX	267	0	267	326 minutes
10	N2NT	S/O-Assisted HP	NJ	170	91	261	215 minutes



# California QSO Party

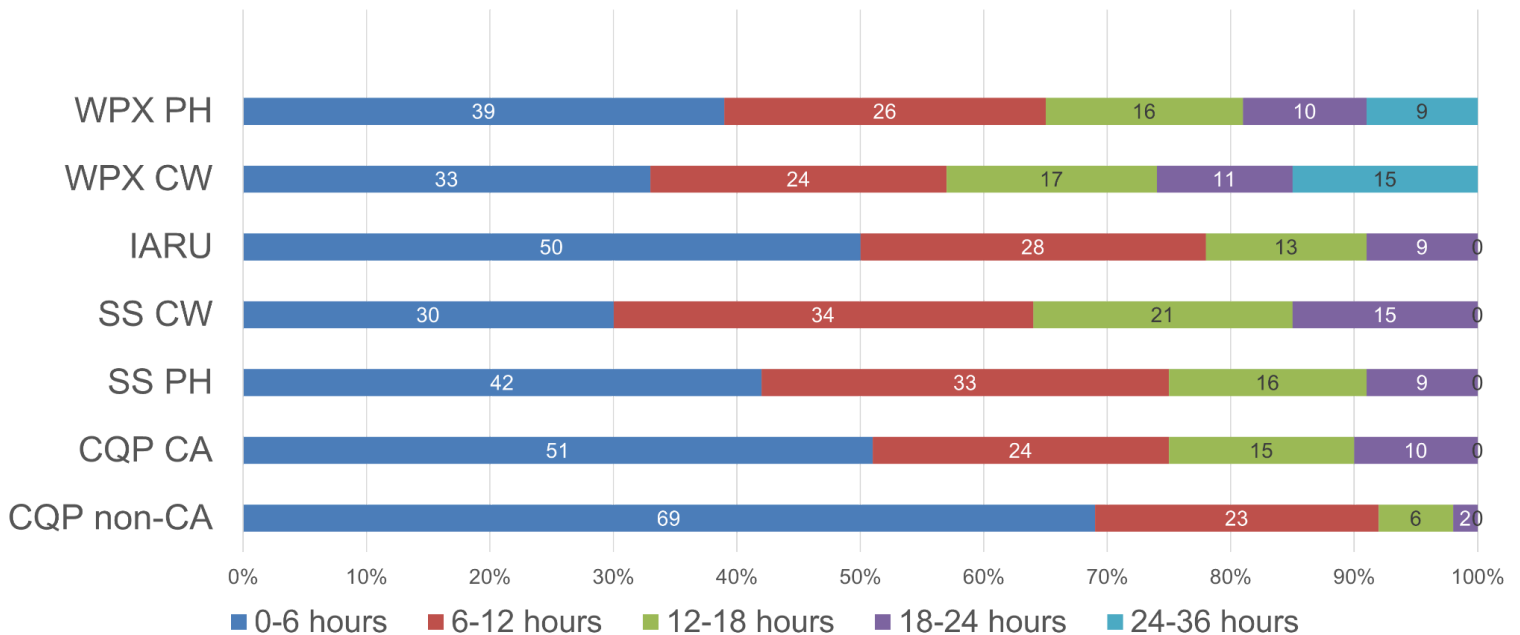
## FAQ - Time Challenge

### Q: Why did you create the CQP Time Challenge?

A: Few Single-Op participants are willing or able to operate the full 24, 36 or 48 hours available in contests. We in the contest community have the opportunity to recognize participants for outstanding performances in shorter operating periods. In the Olympics track and field events, there are seven different duration races that range from the shortest 100m sprints up to the longest with the 10km distance race. All are run on the same track, just running different distances. The sprint athletes are no less worthy than long distance runners.

Consider operating time data from multiple contests in 2023. See chart below. There is clearly an opportunity to enhance incentives and recognition to the vast majority of participants who do not operate contests full time but who are still competitive. We split the CQP Time Challenge into four quarters, similar to an NFL or college football game, or an NBA basketball game. You operate the amount of time that you're able to operate in CQP 2024. We will compare your total QSOs with other participants in your same operating time quarter. This is accomplished without changing any rules and without needing to shorten a contest.

### S/O Op Time in 2023 Contests



# California QSO Party

## **Q: How is operating time determined in CQP?**

A: Operating time is the time you spend making QSOs in CQP. The operating time clock starts with your first QSO made in CQP. It keeps going until you have 15 consecutive minutes in your log without making a QSO. This is considered an off-time period and does not count toward your operating time. Off times are a minimum of 15 minutes long, with no maximum (your off times could be several hours long). There is no limit on the number of off times you have in CQP.

## **Q: How can I be the most competitive in a given time challenge?**

A:

1. Operate as close to 6 hours, 12 hours, 18 hours or 24 hours as you can, and do not exceed. Watch your on-time statistic carefully in your software logger. Operating 6 hours and 1 minute puts you in the 12-hour time challenge window, not the 6 hour window.
2. Operate in a way that maximizes your total QSOs. You might find that operating both CW and SSB will help. The points difference between CW QSOs (3 points) and SSB QSOs (2 points) is irrelevant just for the purposes of this Time Challenge because this challenge is scored by QSOs made, not points. Your log will be scored as normal in the main overall CQP results.
3. Review last year's CQP data graphs to decide when you should operate. See: <https://www.cqp.org/graphs.html>
4. Running high power and entering as Single-Op Assisted will likely give you a competitive advantage.
5. Review propagation and play to the strengths of your station.
6. Make sure the clock on your computer is accurate before the start of CQP and stays that way throughout CQP. If your computer is connected to the Internet, for Windows 10/11 machines, right click the time in the bottom right of your screen, click Adjust date/time, and click the Sync Now button. Alternatively for any Windows machine, download a free program called NetTime from <https://www.timesynctool.com/> and install it. This program automatically sets your computer clock at regular intervals. Inside the NetTime program, click the Settings button and modify the Update Interval to a value more frequent than default.

