

# California QSO Party

## CQP 2025: Time Challenge

*Click on any entry in this Table of Contents to jump directly to that page.*

2025 Time Challenge Background	2
Time Challenge Rules	3
2025 Time Challenge Champions: CA Single-Ops	4
2025 Time Challenge Champions: US/VE/DX Single-Ops	5
Top 10 CA Single-Ops: 24-Hour Time Challenge	6
Top 10 CA Single-Ops: 18-Hour Time Challenge	7
Top 10 CA Single-Ops: 12-Hour Time Challenge	8
Top 10 CA Single-Ops: 6-Hour Time Challenge	9
Top 10 US/VE/DX Single-Ops: 24-Hour Time Challenge	10
Top 10 US/VE/DX Single-Ops: 18-Hour Time Challenge	11
Top 10 US/VE/DX Single-Ops: 12-Hour Time Challenge	12
Top 10 US/VE/DX Single-Ops: 6-Hour Time Challenge	13
2025 Time Challenge Champions: CA Multi-Ops	14
2025 Time Challenge Champions: US/VE/DX Multi-Ops	15
FAQ - Time Challenge	16



# California QSO Party

## 2025 Time Challenge Background

Beginning with CQP 2024, we introduced the CQP Time Challenge.

This was a fun side contest that ran along with the main CQP event. It was intended to inspire additional motivation by participants.

Participants did not need to sign up for any of these challenges. Eligible stations were automatically included in the CQP Time Challenge.

There were no changes to the main CQP rules, categories, overlays, scoring, plaques and main results files. All of that continued unchanged in CQP 2025. This was an additional side challenge to enjoy.

Congratulations to all the time champions who won this CA cheese award.



# California QSO Party

## Time Challenge Rules

### Eligibility:

- Single-Operator and Single-Operator Assisted entrants
- Any power level
- Log submitted to CQP and judged to be a valid, scored log

### Accolade:

8 Champions - 4 inside California and 4 outside California

Winners determined by **highest total number of QSOs** after log checking.

6-Hour Time Champions - one inside California and one outside California

- Operate 1 minute to 360 minutes (0-6 hours) in CQP 2025.

12-Hour Time Champions - one inside California and one outside California

- Operate 361 minutes to 720 minutes (6-12 hours) in CQP 2025.

18-Hour Time Champions - one inside California and one outside California

- Operate 721 minutes to 1080 minutes (12-18 hours) in CQP 2025.

24-Hour Time Champions - one inside California and one outside California

- Operate 1081 minutes to 1440 minutes (18-24 hours) in CQP 2025.

### Award:

- Gourmet California cheese gift pack to SO/SOA champions inside the USA
- California cheese board as alternate award if any champion lives outside the USA
- Top 10 SO/SOA table and Top 10 Multi-op table in results for all four operating time windows



# California QSO Party

## 2025 Time Challenge Champions: CA Single-Ops

### 24-Hour Champion (1,081-1,440 minutes operating time)

Winner	Op Class	QTH	CW QSOs	PH QSOs	Total QSOs	Operating Time	Award Sponsor
K6XX	S/O Assisted HP	SCRU	1,459	835	2,294	1,440 minutes	N6DE

### 18-Hour Champion (721-1,080 minutes operating time)

Winner	Op Class	QTH	CW QSOs	PH QSOs	Total QSOs	Operating Time	Award Sponsor
K6VO (K6NR op)	S/O HP	SBER	1,176	448	1,624	1,059 minutes	N6DE

### 12-Hour Champion (361-720 minutes operating time)

Winner	Op Class	QTH	CW QSOs	PH QSOs	Total QSOs	Operating Time	Award Sponsor
K6LA	S/O HP	LANG	861	410	1,271	715 minutes	AE6Y

### 6-Hour Champion (1-360 minutes operating time)

Winner	Op Class	QTH	CW QSOs	PH QSOs	Total QSOs	Operating Time	Award Sponsor
W1SRD	S/O HP	ELDO	502	0	502	263 minutes	N6DE



# California QSO Party

## 2025 Time Challenge Champions: US/VE/DX Single-Ops

### 24-Hour Champion (1,081-1,440 minutes operating time)

Winner	Op Class	QTH	CW QSOs	PH QSOs	Total QSOs	Operating Time	Award Sponsor
K9CT	S/O Assisted HP	IL	529	667	1,196	1,133 minutes	N6DE

### 18-Hour Champion (721-1,080 minutes operating time)

Winner	Op Class	QTH	CW QSOs	PH QSOs	Total QSOs	Operating Time	Award Sponsor
K5TR	S/O HP	TX	219	656	875	986 minutes	N6DE

### 12-Hour Champion (361-720 minutes operating time)

Winner	Op Class	QTH	CW QSOs	PH QSOs	Total QSOs	Operating Time	Award Sponsor
NW0M	S/O Assisted HP	MO	319	196	515	671 minutes	N6DE

### 6-Hour Champion (1-360 minutes operating time)

Winner	Op Class	QTH	CW QSOs	PH QSOs	Total QSOs	Operating Time	Award Sponsor
K4RO	S/O Assisted HP	TN	235	102	337	323 minutes	N6DE



# California QSO Party

**CQP 2025**

## Top 10 CA Single-Ops: 24-Hour Time Challenge

**(1,081-1,440 minutes operating time)**

Place	Callsign	Class	QTH	CW QSOs	PH QSOs	Total QSOs	Op Time
1	K6XX	S/O-Assisted HP	SCRU	1,459	835	2,294	1,440 minutes
2	N6TV	S/O HP	SCLA	1,430	766	2,196	1,395 minutes
3	WC6H	S/O HP	CALA	1,117	1,009	2,126	1,386 minutes
4	AE6Y	S/O HP	SCLA	1,435	656	2,091	1,439 minutes
5	K6O (N6IE op)	S/O-Assisted HP	SONO	999	864	1,863	1,232 minutes
6	NW6P (W9KKN op)	S/O HP	SCLA	1,197	436	1,633	1,180 minutes
7	W6ML (W6KC op)	S/O-Assisted HP	MONO	1,303	209	1,512	1,332 minutes
8/9	AA6MU	S/O-Assisted HP	SISK	1,166	276	1,442	1,418 minutes
	K6OK	S/O-Assisted HP	ELDO	923	519		1,257 minutes
10	NR6Q	S/O HP	SACR	0	1,415	1,415	1,133 minutes



# California QSO Party

**CQP 2025**

## **Top 10 CA Single-Ops: 18-Hour Time Challenge (721-1,080 minutes operating time)**

Place	Callsign	Class	QTH	CW QSOs	PH QSOs	Total QSOs	Op Time
1	K6VO (K6NR op)	S/O HP	SBER	1,176	448	1,624	1,059 minutes
2	K6SZQ	S/O HP	AMAD	0	1,411	1,411	1,056 minutes
3	N6AA (K2UA op)	S/O HP	LANG	1,273	0	1,273	959 minutes
4	N6RK	S/O HP	SACR	1,033	179	1,212	738 minutes
5	AJ6V	S/O HP	SCLA	870	340	1,210	787 minutes
6	W6SX	S/O-Assisted HP	MONO	1,105	57	1,162	809 minutes
7	K6RIM	S/O-Assisted HP	MARN	1,004	117	1,121	1,034 minutes
8	K6SRZ	S/O-Assisted HP	SONO	878	224	1,102	939 minutes
9	K6MM	S/O-Assisted HP	SCLA	826	266	1,092	927 minutes
10	AD6WL	S/O-Assisted HP	SBER	0	952	952	873 minutes





# California QSO Party

**CQP 2025**

## **Top 10 CA Single-Ops: 12-Hour Time Challenge (361-720 minutes operating time)**

Place	Callsign	Class	QTH	CW QSOs	PH QSOs	Total QSOs	Op Time
1	K6LA	S/O HP	LANG	861	410	1,271	715 minutes
2	NN6DX (W1PR op)	S/O HP	SBAR	657	267	924	718 minutes
3	N6MJ	S/O HP	ORAN	638	256	894	448 minutes
4	NA6O (@W6SRR)	S/O-Assisted HP	ALAM	855	0	855	465 minutes
5	N6NZ	S/O HP	MARP	372	427	799	633 minutes
6	KD6WW	S/O HP	SJOA	795	0	795	509 minutes
7	K9JM	S/O HP	NEVA	793	0	793	596 minutes
8	N6OKU	S/O LP	ORAN	0	772	772	639 minutes
9	KE6GLA	S/O HP	ELDO	380	321	701	683 minutes
10	K0DTJ/6	S/O-Assisted LP	SMAT	657	0	657	626 minutes





# California QSO Party

**CQP 2025**

## **Top 10 CA Single-Ops: 6-Hour Time Challenge**

**(1-360 minutes operating time)**

Place	Callsign	Class	QTH	CW QSOs	PH QSOs	Total QSOs	Op Time
1	W1SRD	S/O HP	ELDO	502	0	502	263 minutes
2	K6AO (W1SRD op)	S/O LP	GLEN	500	0	500	312 minutes
3	W6XU	S/O-Assisted HP	SONO	405	54	459	275 minutes
4	K6AR	S/O HP	SDIE	384	0	384	202 minutes
5	K6YK	S/O HP	SJOA	359	0	359	295 minutes
6	WA7BNM/6	S/O LP	LANG	282	59	341	280 minutes
7	K6NA	S/O HP	SDIE	325	0	325	230 minutes
8	K6RB	S/O HP	SCRU	312	0	312	163 minutes
9	K6EI	S/O LP	KING	290	0	290	231 minutes
10	WB8YQJ	S/O LP	SDIE	284	0	284	340 minutes



# California QSO Party

**CQP 2025**

## **Top 10 US/VE/DX Single-Ops: 24-Hour Time Challenge**

**(1,081-1,440 minutes operating time)**

Place	Callsign	Class	QTH	CW QSOs	PH QSOs	Total QSOs	Op Time
1	K9CT	S/O-Assisted HP	IL	529	667	1,196	1,133 minutes
2	N4ZZ	S/O-Assisted LP	TN	492	401	893	1,306 minutes
3	K5CM	S/O-Assisted HP	OK	496	354	850	1,264 minutes
4	K7RAT (N6TR op)	S/O-Assisted HP	OR	382	416	798	1,121 minutes
5	NR4L	S/O-Assisted LP	TN	462	308	770	1,362 minutes
6	N0HJZ	S/O-Assisted LP	MN	337	387	724	1,377 minutes
7	K7SV	S/O LP	VA	435	223	658	1,151 minutes
8	W0ELT	S/O-Assisted HP	WI	357	277	634	1,148 minutes
9	N2PP	S/O HP	NY	309	251	560	1,097 minutes
10	VE7SK	S/O LP	BC	234	103	337	1,095 minutes



# California QSO Party

**CQP 2025**

## **Top 10 US/VE/DX Single-Ops: 18-Hour Time Challenge**

**(721-1,080 minutes operating time)**

Place	Callsign	Class	QTH	CW QSOs	PH QSOs	Total QSOs	Op Time
1	K5TR	S/O HP	TX	219	656	875	986 minutes
2	K3MM	S/O-Assisted HP	MD	444	204	648	805 minutes
3	K9NW	S/O-Assisted HP	IN	449	195	644	870 minutes
4	VE3NNT	S/O-Assisted HP	ON	488	115	603	857 minutes
5	N8II	S/O LP	WV	297	284	581	848 minutes
6	N6AR	S/O-Assisted HP	FL	339	228	567	807 minutes
7	K7ABC (K6LL op)	S/O-Assisted HP	AZ	350	213	563	970 minutes
8	W5TM	S/O-Assisted HP	OK	522	0	522	1,077 minutes
9	NE1C (K1NZ op)	S/O-Assisted HP	MA	141	352	493	774 minutes
10	W6OAT	S/O-Assisted HP	WA	292	183	475	971 minutes



# California QSO Party

**CQP 2025**

## Top 10 US/VE/DX Single-Ops: 12-Hour Time Challenge

**(361-720 minutes operating time)**

Place	Callsign	Class	QTH	CW QSOs	PH QSOs	Total QSOs	Op Time
1	NW0M	S/O-Assisted HP	MO	319	196	515	671 minutes
2	K9OM	S/O-Assisted LP	WI	475	0	475	717 minutes
3	N4UU	S/O-Assisted HP	FL	286	184	470	706 minutes
4/5	N0AT	S/O-Assisted HP	MN	454	0	454	521 minutes
	N5RZ	S/O HP	TX	243	211		687 minutes
6	K0EJ	S/O-Assisted HP	TN	442	0	442	599 minutes
7	N2BJ	S/O-Assisted HP	IL	265	175	440	568 minutes
8	KG9X	S/O-Assisted LP	IL	415	0	415	548 minutes
9	VE3YT	S/O-Assisted HP	ON	302	112	414	591 minutes
10	K0RC	S/O-Assisted LP	MN	288	122	410	624 minutes



# California QSO Party

**CQP 2025**

## **Top 10 US/VE/DX Single-Ops: 6-Hour Time Challenge**

**(1-360 minutes operating time)**

Place	Callsign	Class	QTH	CW QSOs	PH QSOs	Total QSOs	Op Time
1	K4RO	S/O-Assisted HP	TN	235	102	337	323 minutes
2	K3TN	S/O-Assisted HP	MD	300	0	300	343 minutes
3	N3RD	S/O-Assisted HP	PA	294	0	294	281 minutes
4	N2ZN	S/O-Assisted HP	NY	143	144	287	339 minutes
5	N3AM	S/O-Assisted HP	MD	276	0	276	261 minutes
6	N3QE	S/O-Assisted HP	MD	270	0	270	296 minutes
7	K3IE	S/O-Assisted HP	TN	214	43	257	322 minutes
8	KY7M (@NA7TB)	S/O-Assisted HP	AZ	155	101	256	333 minutes
9	K3AJ	S/O-Assisted HP	MD	161	85	246	241 minutes
10	W8MJ	S/O-Assisted LP	MI	163	77	240	333 minutes



# California QSO Party

## 2025 Time Challenge Champions: CA Multi-Ops

### 24-Hour Champion (1,081-1,440 minutes operating time)

Winner	Op Class	QTH	CW QSOs	PH QSOs	Total QSOs	Operating Time
NS6T	M/M HP	TULA	1,731	727	2,458	1,407 minutes

### 18-Hour Champion (721-1,080 minutes operating time)

Winner	Op Class	QTH	CW QSOs	PH QSOs	Total QSOs	Operating Time
N6N	M/S LP	SBEN	656	340	996	997 minutes

### 12-Hour Champion (361-720 minutes operating time)

Winner	Op Class	QTH	CW QSOs	PH QSOs	Total QSOs	Operating Time
W6BX	M/2 HP	MONT	570	404	974	477 minutes

### 6-Hour Champion (1-360 minutes operating time)

Winner	Op Class	QTH	CW QSOs	PH QSOs	Total QSOs	Operating Time
K6N	M/2 HP	NAPA	271	0	271	180 minutes



# California QSO Party

## 2025 Time Challenge Champions: US/VE/DX Multi-Ops

### 24-Hour Champion (1,081-1,440 minutes operating time)

Winner	Op Class	QTH	CW QSOs	PH QSOs	Total QSOs	Operating Time
KL5DX	M/2 HP	AK	384	334	718	1,148 minutes

### 18-Hour Champion (721-1,080 minutes operating time)

Winner	Op Class	QTH	CW QSOs	PH QSOs	Total QSOs	Operating Time
N1RM	M/S HP	VA	225	225	450	770 minutes

### 12-Hour Champion (361-720 minutes operating time)

Winner	Op Class	QTH	CW QSOs	PH QSOs	Total QSOs	Operating Time
VA7FBS	M/2 LP	BC	1	50	51	524 minutes

### 6-Hour Champion (1-360 minutes operating time)

Winner	Op Class	QTH	CW QSOs	PH QSOs	Total QSOs	Operating Time
VY1CO	M/S HP	YT	46	0	46	144 minutes





# California QSO Party

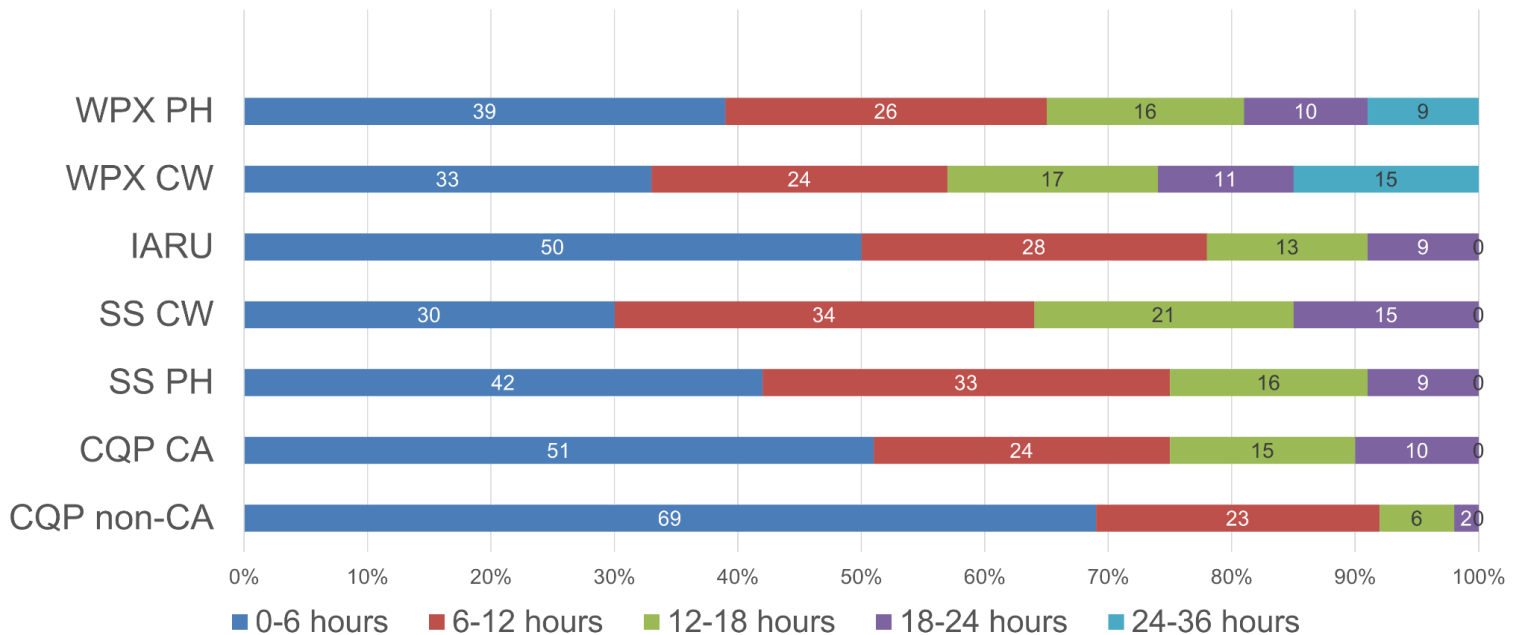
## FAQ - Time Challenge

### Q: Why did you create the CQP Time Challenge?

A: Few Single-Op participants are willing or able to operate the full 24, 36 or 48 hours available in contests. We in the contest community have the opportunity to recognize participants for outstanding performances in shorter operating periods. In the Olympics track and field events, there are seven different duration races that range from the shortest 100m sprints up to the longest with the 10km distance race. All are run on the same track, just running different distances. The sprint athletes are no less worthy than long distance runners.

Consider operating time data from multiple contests in 2023. See chart below. There is clearly an opportunity to enhance incentives and recognition to the vast majority of participants who do not operate contests full time but who are still competitive. We split the CQP Time Challenge into four quarters, similar to an NFL or college football game, or an NBA basketball game. You operate the amount of time that you're able to operate in CQP 2024. We will compare your total QSOs with other participants in your same operating time quarter. This is accomplished without changing any rules and without needing to shorten a contest.

### S/O Op Time in 2023 Contests



# California QSO Party

**Q: How is operating time determined in CQP?**

A: Operating time is the time you spend making QSOs in CQP. The operating time clock starts with your first QSO made in CQP. It keeps going until you have 15 consecutive minutes in your log without making a QSO. This is considered an off-time period and does not count toward your operating time. Off times are a minimum of 15 minutes long, with no maximum (your off times could be several hours long). There is no limit on the number of off times you have in CQP.

**Q: How can I be the most competitive in a given time challenge?**

A:

1. Operate as close to 6 hours, 12 hours, 18 hours or 24 hours as you can, and do not exceed. Watch your on-time statistic carefully in your software logger. Operating 6 hours and 1 minute puts you in the 12-hour time challenge window, not the 6 hour window.
2. Operate in a way that maximizes your total QSOs. You might find that operating both CW and SSB will help. The points difference between CW QSOs (3 points) and SSB QSOs (2 points) is irrelevant just for the purposes of this Time Challenge because this challenge is scored by QSOs made, not points. Your log will be scored as normal in the main overall CQP results.
3. Review last year's CQP data graphs to decide when you should operate. See: <https://www.cqp.org/graphs.html>
4. Running high power and entering as Single-Op Assisted will likely give you a competitive advantage.
5. Review propagation and play to the strengths of your station.
6. Make sure the clock on your computer is accurate before the start of CQP and stays that way throughout CQP. If your computer is connected to the Internet, for Windows 10/11 machines, right click the time in the bottom right of your screen, click Adjust date/time, and click the Sync Now button. Alternatively for any Windows machine, download a free program called NetTime from <https://www.timesynctool.com/> and install it. This program automatically sets your computer clock at regular intervals. Inside the NetTime program, click the Settings button and modify the Update Interval to a value more frequent than default.

